



Kömmerling®

TODAY FOR TOMORROW



FOR IMAGINATIVE INTERIOR DESIGN

KömaStyle® – wall cladding

GIVE YOUR ROOMS CHARACTER

KömaStyle – the wall cladding system for modern interior design

Renovating living spaces and bathrooms is a real pleasure with KömaStyle from Kömmerling. The reason? This wall cladding system not only impresses with excellent quality, it also offers a wealth of design options and is 100% recyclable.

A REAL MULTI-TALENT

All KömaStyle variants can be used in a variety of ways, for example

- as wall cladding in the bathroom and on the shower wall panel
- in sanitary and spa facilities and swimming pools
- in hospitals and care facilities
- as wall and ceiling cladding in interior finishing
- in retail and trade fair construction
- as an alcove panel (e.g. for kitchens)
- in restaurant and hotel construction



COMPLETE COMFORT

The generous dimensions of the KömaStyle sheets mean that there are fewer joints. The result is smooth, elegant surfaces that save time during installation and maintenance. Lime and soiling can hardly adhere at all, making the colour laminate sheets particularly hygienic.

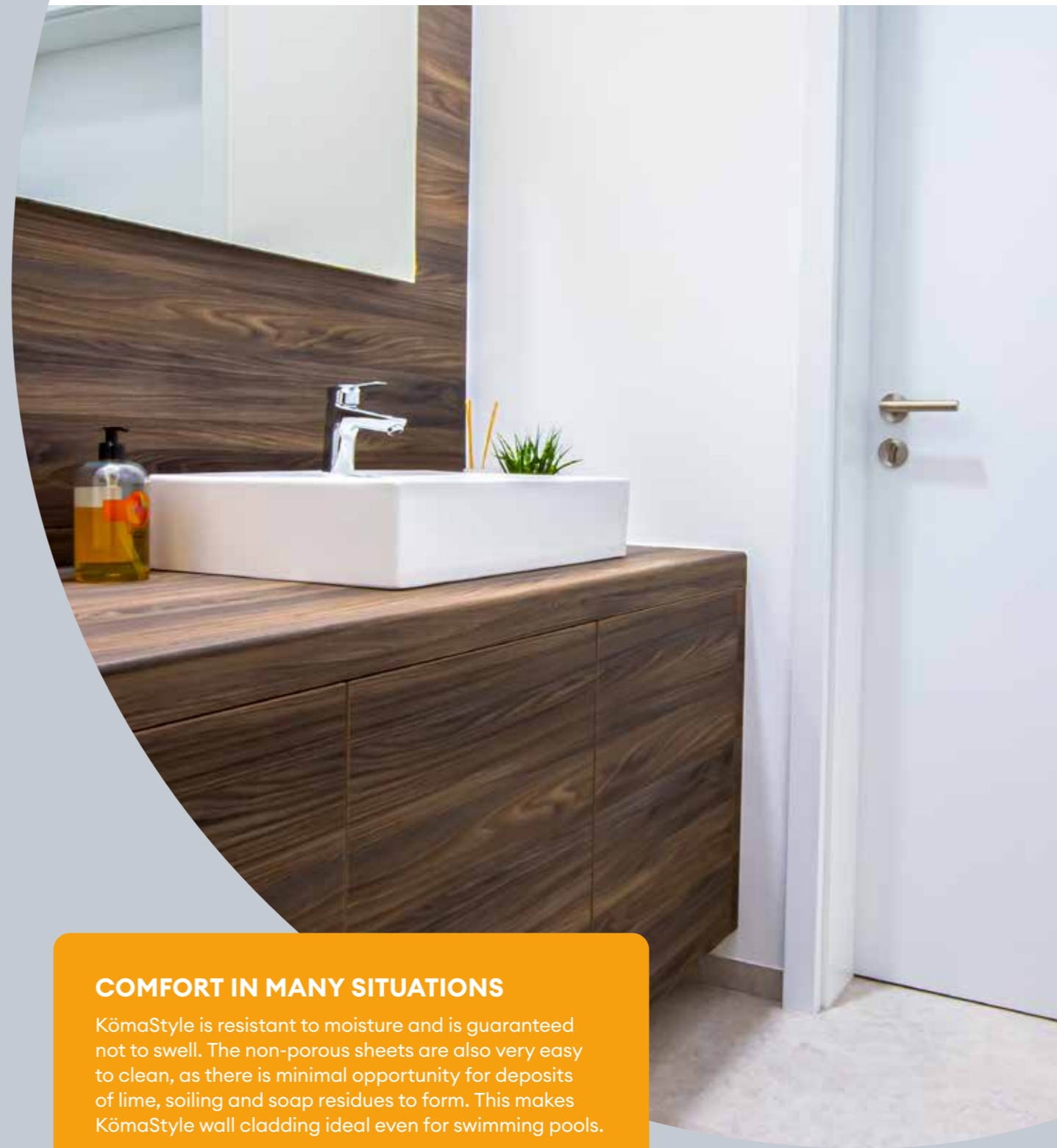
Practical: KömaStyle sheets are a convenient and elegant way of lining outdated wall areas.

KömaStyle®

PERFECT FOR DAMP AND WET ROOMS

And much more

KömaStyle wall cladding is made of high-quality PVC-U sheets that keep looking good for a long time – even in moist environments. We can therefore give you a five-year warranty with a clear conscience.



COMFORT IN MANY SITUATIONS

KömaStyle is resistant to moisture and is guaranteed not to swell. The non-porous sheets are also very easy to clean, as there is minimal opportunity for deposits of lime, soiling and soap residues to form. This makes KömaStyle wall cladding ideal even for swimming pools.

NICE TO LOOK AT – IN THE LONG TERM

Aggressive cleaning agents or mechanical action cannot damage the high-quality KömaStyle sheets. The reason? They are scratchproof and extremely resistant to chemicals, light and heat.

A WEALTH OF ATTRACTIVE COLOUR LAMINATE VARIANTS

WOOD GRAIN LAMINATES



Light Oak D04



Oak desert D05



Oak white D06

STONE LAMINATES



Granite D30



Concrete light grey D32



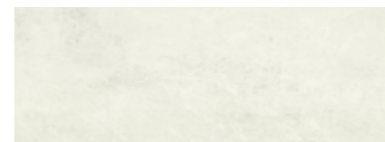
Concrete grey D33



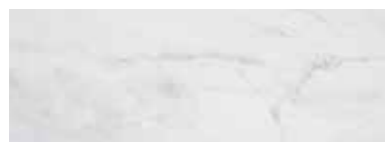
Concrete ceramico D34



Stone grey ceramico D35



Stone white ceramico D36

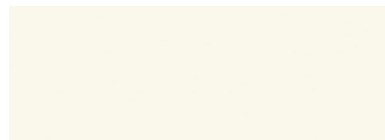


Marble D37



Rusty brown D38

PLAIN COLOURED LAMINATES



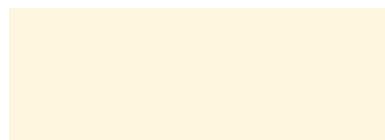
Plain coloured white D50



Plain coloured anthracite D52



Plain coloured light grey D53



Vanilla D54



SPECIAL COLOUR LAMINATES



Structure pearl cross D76



Structure steel grey cross D77



Texture vintage grey D79



Texture vintage brown D80



PREMIUM LOOK, ATTRACTIVE SURFACES

Make the most of your wall design: the KömaStyle sheets with digital printing are available in ten decors. Some of them with a pearl finish, others in variants with wood grain or stone effect. The sheets are also available in different material variants and thicknesses: As aluminium composite (thickness: 3 mm) or as integral foam (thickness: 8 mm), each with a useful width of 1220 mm. We will be happy to provide you with information about other colour laminate variants and surface patterns.

PEARL FINISH



Bourgogne M31



Bourgogne grey M32



Travertino White M33



Terrazzo light grey M34



Terrazzo grigio scuro M35



Claire M36

WOOD GRAIN AND STONE EFFECT



Clinker brick M30



Deep Dark 1 M37



Country house oak white oiled M50



Teak Wall II M51

PERFECT INSTALLATION HAS NEVER BEEN EASIER

Practically unbeatable

Commercial handheld circular saws or jigsaws are all it takes to cut the KömaStyle decorative sheets to size. Simply use saw blades for wood or plastic for this purpose. If you also use a guide rail or work on the back of the sheet, clean edges are guaranteed. Would you like to tailor the KömaStyle wall cladding to the space available in your room? This is easily achieved using hand power drills or cordless screwdrivers with drill bits for wood or plastic.

USER-FRIENDLY INSTALLATION, RAPID RESULTS

For installation, we recommend the Kleiberit 584.0 adhesive or a comparable mounting glue. There is no need for long waiting times: Just 48 hours after bonding, you can seal and join the KömaStyle sheets. Once the joint material has hardened, your rooms are ready for immediate use.



ATTRACTIVE COLOUR LAMINATE VARIANTS WITH A WOOD AND STONE FINISH AS WELL AS PLAIN COLOURS



100% RECYCLABLE



EASY TO CLEAN



QUICK TO FIX



MOISTURE-RESISTANT



SIMPLE MANUFACTURE



CHEMICAL-RESISTANT



CAN BE MACHINED WITH ALL WOODWORKING TOOLS



SCRATCH- AND ABRASION-RESISTANT



VERY GOOD BONDING



NOT SUSCEPTIBLE TO HAIRLINE CRACKS



LIGHTWEIGHT



RESISTANT TO MOULD AND TERMITES



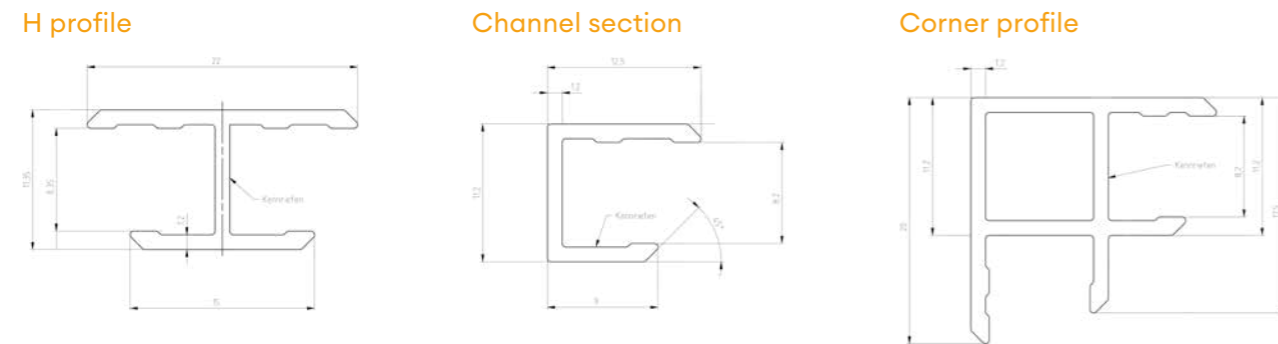
FOR INDOOR USE ONLY



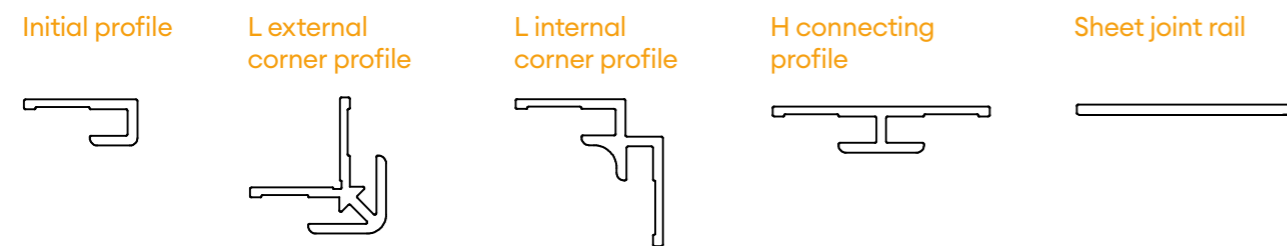
EXCELLENT DURABILITY

ANCILLARIES

Profiles for KömaCel sheets (8 mm)



Profiles for aluminium composite sheets (3 mm)



Specifications (profiles)

Name	8 mm profiles	3 mm profiles
Colour	Colour E 6 BG 1 Natural anodised	Colour E 6 BG 1 Natural anodised
Length	3000 mm	3000 mm
Packaging unit (PU)	10 pcs	10 pcs

* Individually shrink-wrapped



Delivery programme

Name	Lamination	Digital printing KömaCel	Digital printing Aluminium composite
Dimensions	2500 x 1250 mm	2600 x 1250 mm	2500 x 1250 mm
Thickness	8 mm	8 mm	3 mm
Pallet contents	40 pcs	50 pcs	50 pcs

Specifications

Name	Standard	Lamination	Digital printing KömaCel	Digital printing Aluminium composite
Weight		4.400 g/m ²	4.400 g/m ²	3.800 g/m ²
Compressive strength (Hooke's law)	DIN EN ISO 844	> 7 MPa	> 7 MPa	–
Thermal conductivity (range from 0 °C to +60 °C)	DIN EN ISO 22007	0.05–0.07 W/mK	0.05–0.07 W/mK	–
Insulation value (heat transfer coefficient)	DIN EN ISO 674	approx. 3.1 W/m ² K	approx. 3.1 W/m ² K	–
Airborne sound insulation index	DIN EN ISO 10848	approx. 25 dB	approx. 25 dB	–
Water absorption after 7 days	DIN EN ISO 62	approx. 0.2%	approx. 0.2%	–

Specifications (composite/colour laminate)

Name	Standard	Lamination	Digital printing KömaCel	Digital printing Aluminium composite
Chemical resistance	DIN 68861 - 1:2001 - 01	1 B	1 B	1 B
Abrasion resistance	DIN 68861 - 2:2013 - 02	2 B	2 B	2 B
Scratch resistance	DIN 68861 - 4:2013 - 02	4 E	4 E	4 E
Dry heat	DIN 68861 - 7:2001 - 04	7 D	7 D	7 D
Humid heat	DIN 68861 - 8:2001 - 04	8 C	8 C	8 C
Light resistance	DIN EN 15187:2006 - 12	> 6	> 5	> 5
Continuous operating temperature		up to 58 °C	up to 58 °C	up to max. 80 °C

Subject to modification without prior notice.

Tested according to fire protection standard DIN EN 13501-1

- > KömaStyle has the fire certification: E classification
- > KömaStyle (KömaCel supporting sheet) has the fire certification: C-s3 d2
- > KömaStyle (aluminium composite supporting sheet) has the fire certification: B2

#KömmerlingForTomorrow

profine GmbH
Kömmerling

Zweibrücker Straße 200
66954 Pirmasens
Germany
Tel. +49 (0) 6331 56 0
E-mail: info@koemmerling.com

www.koemmerling.com

